

Building Expertise in the Dissemination of Research Knowledge to Advance Palliative Care Policy and Practice: Evaluation of a Knowledge Transfer and Exchange Workshop

Prof George Kernohan¹, Assoc Prof Suzanne Guerin², Ms Marie McKeon³, Dr Cathy Payne³, Dr Mary Rabbitte³ and Dr Lucia Prihodova⁴.
¹Ulster University; ²University College Dublin; ³All Ireland Institute of Hospice and Palliative Care; ⁴Royal College of Physicians of Ireland

CHALLENGE

- Achieving impact begins with knowledge transfer and exchange.
- Developing a comprehensive dissemination strategy should be an integral part of every research project.
- However, palliative care researchers have often received little, if any formal training in knowledge transfer and exchange despite it being a complex non-linear process which requires interactive exchange.

AIM

To build and evaluate competence in the area of knowledge transfer and exchange using a peer reviewed Evidence-based Model for the Transfer & exchange of Research Knowledge "EMTReK". This model was developed specifically for palliative care research to guide dissemination activities.



#KTEWorkshopLearningObjectives

EMTReK MODEL

The EMTReK model is designed to support researchers' developing research dissemination strategies (see figure 1).

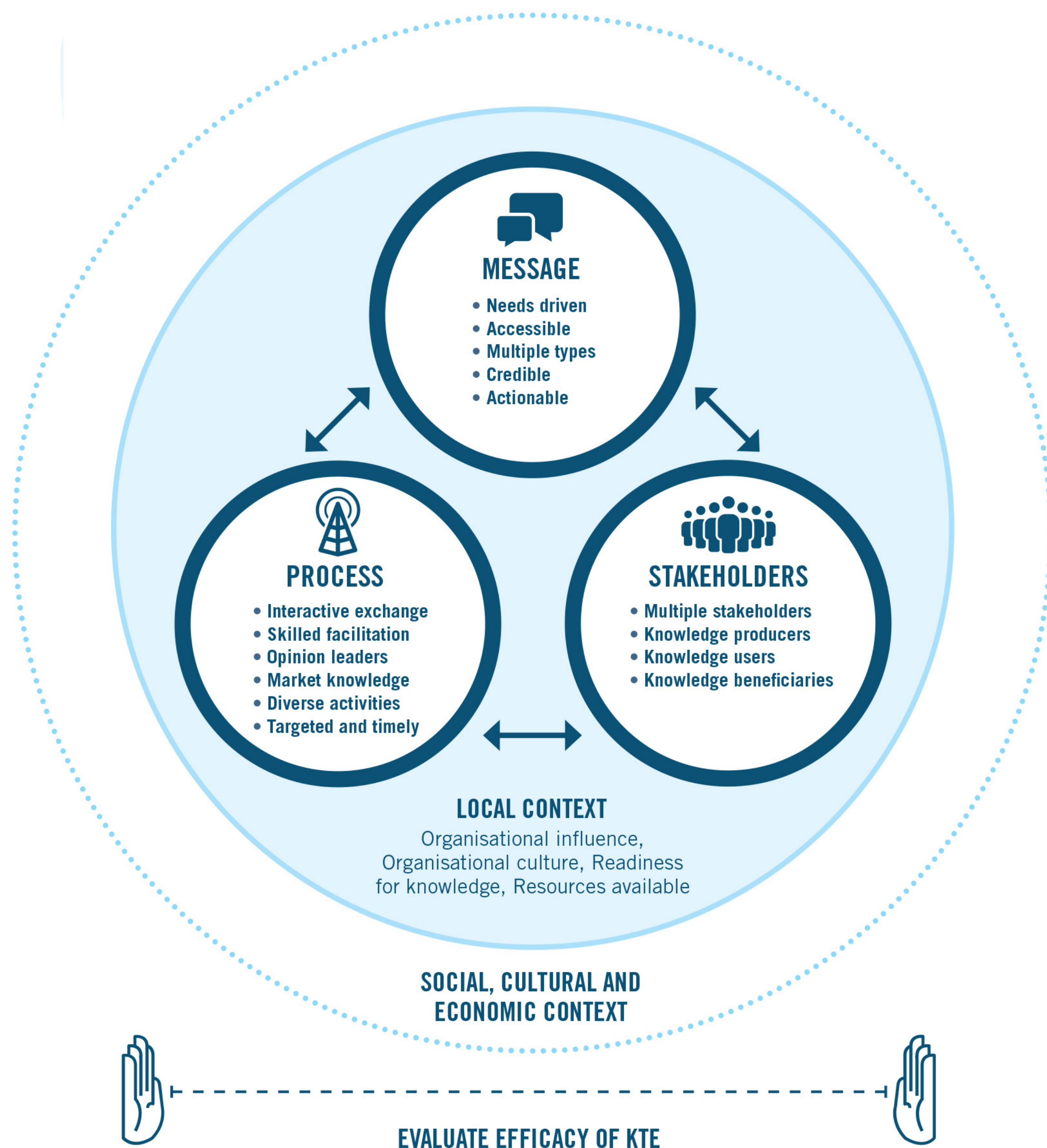


Figure 1. EMTReK Model: a knowledge transfer and exchange model

A COLLABORATIVE PARTNERSHIP

This collaborative multidisciplinary partnership brought skills from health research, psychology, education, brand management and traditional- and digital- marketing to develop a relevant knowledge transfer and exchange workshop for palliative care research.



AIIHPC

All Ireland Institute of Hospice and Palliative Care



METHOD

In 2017, AIIHPC set a three-year timeframe to build expertise in developing palliative care research dissemination strategies. To achieve this objective a knowledge transfer and exchange workshop for palliative care research was developed advocating the use of the EMTReK model. This ongoing project is using a three stage iterative process to ensure workshop content meets the needs of future participants:

STAGE ONE

Design and development of a learner centred, CPD* approved one day workshop including:

- A presentation on the development, exploration and implementation of the EMTReK model.
- Worksheets to guide group work activities.
- Group work on application of the model in palliative care research.

STAGE TWO

Delivery of a workshop in two parts, using a multidisciplinary approach:

- An instructor-guided presentation.
- Group work: five cycles of activity applying the EMTReK model to palliative care research projects. In between each cycle of activity open floor discussions around individual components of the model, supported by expert facilitation to promote peer-learning.

STAGE THREE

Evaluation of the workshop and implementation of findings to evolve workshop content:

- Following the workshop held in Dublin September 2017, AIIHPC and its collaborative partners developed a process chart to aid workshop participants retention and retrieving of information on how to implement the EMTReK model.

*continuous professional development

RESULTS

Key findings:

- Pre-workshop 93% of participants reported their skills in terms of using non-traditional dissemination tools (i.e. podcasts, infographics, YouTube videos) as weak or fair.
- Post-workshop 94% of attendees either agreed or strongly agreed with the statement: "I plan to use a broader mix of communication tools in the future".
- This provides evidence of a change in participants understanding of the usefulness of dissemination tools available. 100% of respondents confirmed they would recommend attending the workshop.

Knowledge Transfer and Exchange Evaluation Survey (workshop participants' responses)	Pre-Workshop (n=15)	Post-Workshop (n=16)
% of participants who believe you should begin planning a research dissemination plan when writing a research proposal	67%	94%
% of participants who believe activation of a research dissemination plan should begin at the start of a research project	53%	69%
% of participants that confirmed they will use the EMTReK model	N/A	62%

CONCLUSION

Development, delivery and evaluation of a knowledge transfer and exchange workshop for palliative care research has shown that there are gaps in researchers' knowledge and skills. However, this active learning workshop focused on developing strategic dissemination plans for palliative care research has proven to address the knowledge gap and support competence building in knowledge transfer and exchange skills.

More information available upon request: info@aiahpc.org
 Or Visit: www.professionalpalliativehub.com/research