

# Strategic Drivers for Palliative Care Outcomes Measurement in Republic of Ireland

Prof Karen Ryan, Consultant in Palliative Medicine, St Francis Hospice and Mater Misericordiae University Hospital; Clinical Lead, National Clinical Programme for Palliative Care



**PALLIATIVE  
CARE**

2012	Future Health: A Strategic Framework for Reforms of the Health Service 2012-2015
2013	Healthy Ireland – A Framework for Improved Health and Wellbeing 2013 – 2025
2013	Report on Community Healthcare Organisations (Healy Report)
2013	The Establishment of Hospital Groups as a Transition to Independent Hospital Trusts (Higgins Report)
2013	eHealth strategy for Ireland (2014 – 2020)
2015	Department of Health Statement of Strategy 2015 – 2017
2015	Transformation of the Centre, Direction of Travel
2016	Health Services People Strategy 2015 - 2018
2017	Houses of the Oireachtas Committee on the Future of Healthcare Sláintecare Report

## Key policy priorities may be summarised as:

---

- Keeping people healthy,
- Providing the healthcare people need,
- Delivering high quality services,
- Getting the best value from health system resources,
- Reforming service delivery through the creation of new delivery mechanisms (Hospital Groups, Community Healthcare Organisations and the National Ambulance System) and by changing the way that the corporate centre of the HSE interacts with the service delivery entities.

3

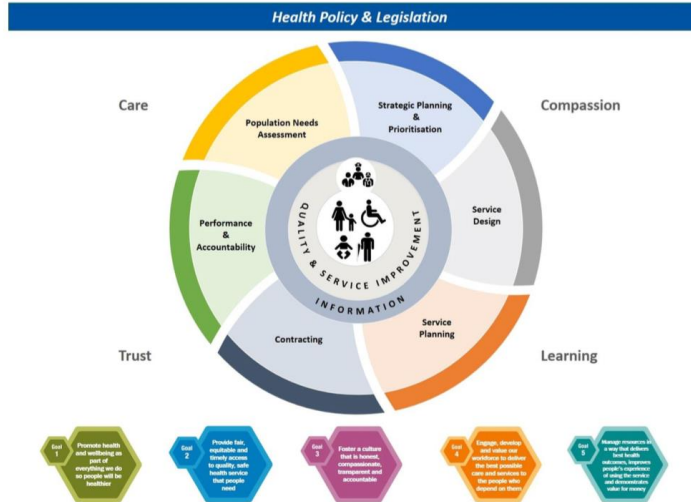
## Commissioning as a mechanism for reforming service delivery and achieving these priorities?

---

- Commissioning is commonly understood as a **strategic process** to link resource allocation with meeting assessed needs, achieving better **outcomes** for service users, **value** for money and high **quality** services
- Concept of commissioning has been evolving since the 1980s
  - Initially- purchaser-provider split, competitive tendering, increasing choice, achieving value
  - More recently- strategic commissioning, outcomes based commissioning

4

## Evidence Informed Commissioning Cycle



5

## The future is getting closer....

- General direction of travel of DOH and HSE
- Palliative Care Services Three Year Development Framework (2017-2019)

### Oireachtas Committee on the Future of Healthcare Sláintecare Report

#### 4. SOCIAL CARE EXPANSION

- **Universal palliative care - €49.8 million over the first five years of the plan**

6